

## Spare parts

ITEM NO.	PART NO.	DESCRIPTION
1	MW05B4P-19	Fan shroud I
2	MW05B4P-22	Fan I
3	MW05B4P-18	Bolt M5*125
4	GB/T97.1-2002	WasherØ5
5	GB/T77	Bolt M6*10
6	MW05B4P-03	Crank shaft
7	GB/T276	Bearing
8	GB/T818-2000	Cross head bolt M4*8
9	GB/T97.1-2002	Washer Ø4
10	MW05B4P-01	Crankcase
11	GB/T70.1	Bolt M4*16
12	MW05B4P-04	Connecting rod
13	MW05B4P-05	Piston ring
14	MW05B4P-06	Piston cap
15	JB982	Washer Ø6
16	MW15BG.04-01	Bolt M6*16
17	MW05B4P-07	Cylinder
18	MW05B4P-02	Piston cap gasket
19	MW05B4P-08	Cylinder seal
20	GB/T848	Washer Ø4
21	MW05B4P-10	Reed valve
22	MW05B4P-09	Valve plate
23	MW05B4P-12	Reed valve block
24	GB/T823	Bolt M4*5
25	MW05B4P-13	Cylinder cap seal
26	MW05B4P-14A	Cylinder cap
27	GB/T70.1-2000	Bolt M5*25
28	MW05B4P-21	Pipe holder
29	MW05B4P-20	Pump cover
30	GB/T845	Cross head screw ST2.9*13
31	MWL10B4P-16	Seal
32	MW05B4P-16	Air pipe
33	AC1506-15Y	Elbow
34	MW05B4P-14D	Cylinder cap
35	AC1506.14J	Air filter
	MW05B4P-26	Muffler tube
36	MW05B4P-19A	Fan shroud II

ITEM NO.	PART NO.	DESCRIPTION
37	MW05B4P-23	Fan II
38	MW05B4P-01A	Crankcase
39	MW05B4P.01	Rubber cushion
40	GB/T862.2	Serrated locking gasket Ø4
41	GB/T818-2000	Cross head bolt M4*12
42	GB/T6177.1	Nut M6
43	GB/T276	Bearing
44	MW05B4P.02	Rotor assembly
45	ACW2506BG4P-22	Gommet
46	MW05A4P.03A	Stator assembly
47	Ø6*1(0504)	Aluminum tube
48	MW05B4P-15	Gasket
49	AC1506.08-01A	Nut
50	AC1506.08-03A	Ferrule A
51	AC1506.09Q-01C	Check valve
52	ACW05038BGM4P.01	Inlet pipe
53	CWE-16/0.7-03	Handle grip
54	CWG-038/1.0-00C	Tanks assembly
55	ACW2506BG4P.13	Drain valve
56	AC2520BDM-04C	Straight joint
57	Ø10*1.5(0504)	Pipe
58	AC1506.11-01B	Nut
59	AC1506.11-03A	Ferrule B
60	AC2016BDM-I-01	Sleeve
61	ACW2016BDM-10D	Elbow
62	ACWL1008LBGM4P-08	K cap nut
63	ACW05038BGM4P-03	Bolt M6*14
64	GB/T862.2	Serrated lock washers 6
65	GB/T6177.1	Nut M6
66	CWG-038/1.0-01	Control panel
67	AC1506.06Q	Coupler
68	AC2030BH-I.01J	Pressure gauge
69	AC2030BH-I.01J	Pressure gauge
70	ACW05038BG-M4P.02-01B	Regulator knob
71	ACW05038BG-M4P.02-02C	Pressure regulator assy
72	AC1506.02D5	Safety valve

<b>ITEM NO.</b>	<b>PART NO.</b>	<b>DESCRIPTION</b>
73	AC2016BD-13A	End cap
74	GB/T5783	Bolt M6*16
75	GB/T96.1-2002	Washer Ø6
76	ACWL1008LBGM4P-07A	Rubber foot
77	M20B.02.02X	Thermal protector
78	MW05B4P-25	Capacitor cushion
79	MW05A-10B	Capacitor
80	5N-4	Zip tie
81	MW05B4P-24C	Capacitor case
82	AC2030BH-IFJ-004C	Power cord
83	AC1506.01G	Pressure switch

## Figures

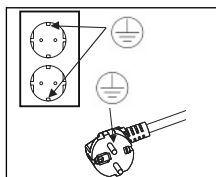


Fig. A

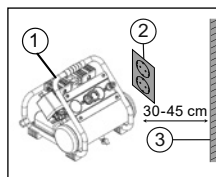


Fig. B

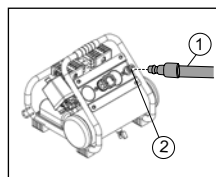


Fig. C

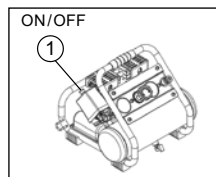


Fig. D

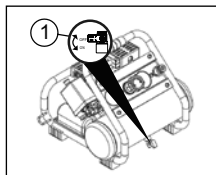


Fig. E

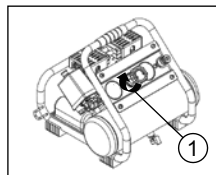


Fig. F

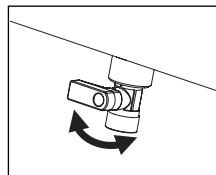


Fig. G

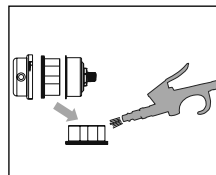


Fig. H

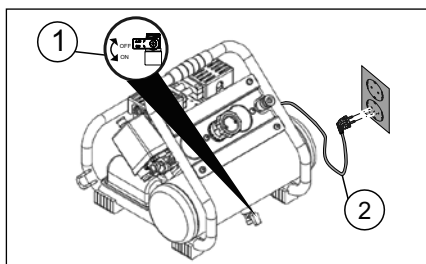


Fig. I

## Key parts

