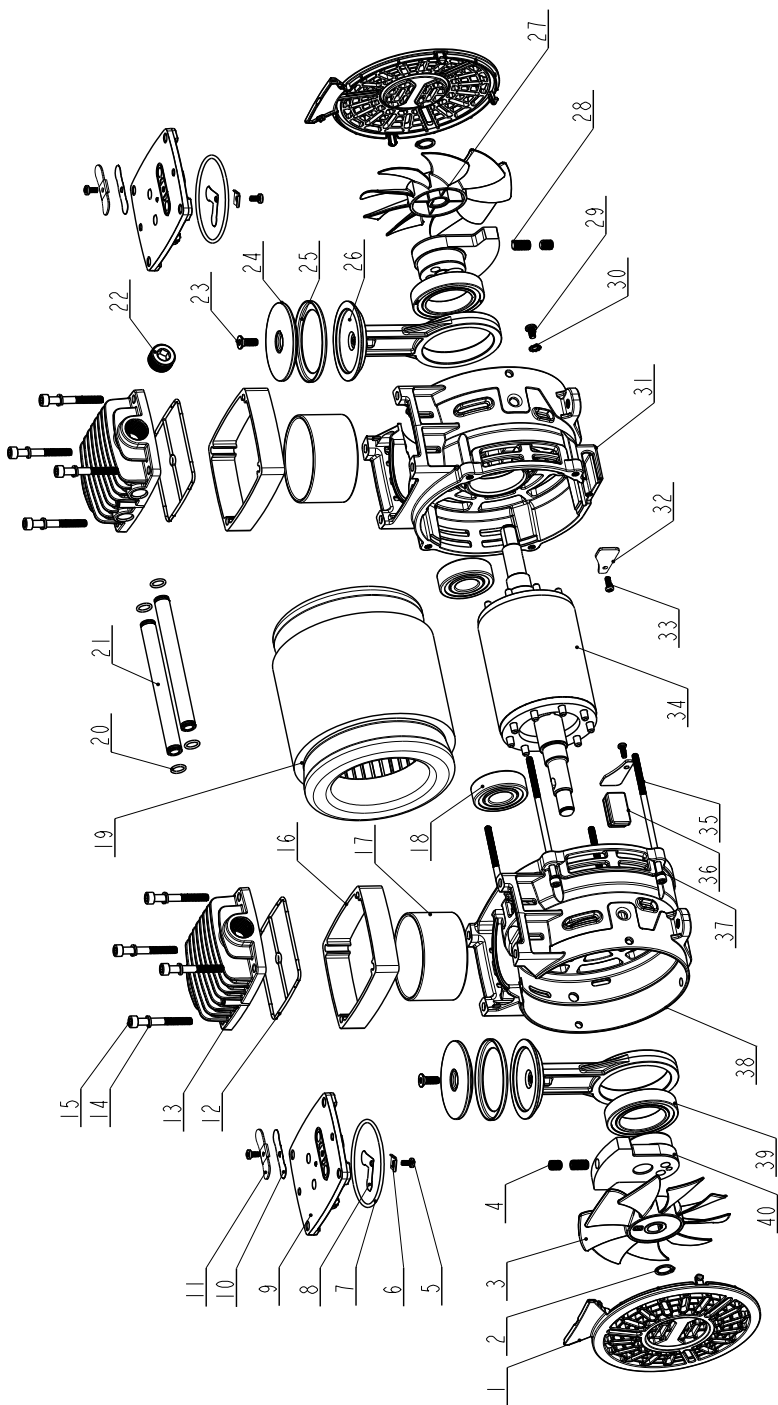


Spareparts

ITEM NO.	PART NO.	DESCRIPTION
1	BQL201.39.14	Self-Tapping Screw ST3.9x14F
2	CE0902S.00.07	Clamp
3	CE0917S.30.00	Heat Shroud
4	BQL201.04.05	Screw M4x17
5	TATF04.03.05	Elbow Fitting
6	TAF101.01.01	Air Filter
7	FAQG01.01.02	Muffler
8	M14000Kal.00.00	Motor Pump Assembly
9	TATF02.03.12	Metal Tube
10	TARP01.02.07	Cushion Pad
11	BQN208.01.01	Nut M8
12	TQDX23.01.DX	Connecting line
13	CE0929W.00.01	Solenoid Valve
14	TAVA02.CV.05	Check Valve
15	TAWH03.06.02	Wheel
16	BQL494.10.05	Shoulder Bolt
17	BQW210.01.01	Spring Washer Ø10
18	BQN110.01.01	Flange Nut M10
19	AT2305.00.00	Tank
20	CE0505W.00.03	Latch Assembly
21	TAVA02.DV.06	Drain Valve
22	TARP01.01.02	Rubber Foot
23	BQL494.10.01	Screw M10x20
24	TATF05.03.03	End Cap
25	BQW110.01.02	Washer Ø10
26	CE0901S.00.02	Capacitor fixing ring
27	TACA22.45.08	Capacitor
28	CC1221W.00.01	Handle
29	TQJC03.01.02	Crimp Cap
30	TAGJ03.03.90	Quick Coupler
31	TAVA01.SV.02	T-junction
32	TAFA01.TY.T0	Pressure Regulator

ITEM NO.	PART NO.	DESCRIPTION
33	TQDX23.02.DX	connecting line
34	TATF07.01.02	Straight Connector
35	TQDX23.03.PL	Power Cord
36	TAPGRA.40.02	Pressure Gauge
37	TASWPS.00.27	Pressure Switch
38	TAFA01.AQ.30	Safety Valve
39	TAPGAX.40.02	Pressure Gauge
40	TQJC03.01.03	Crimp Cap
41	CC1103W.00.02	Clamp
42	BQL204.48.01	Self-Tapping Screw ST4.8x14F
43	CE0902S.00.06	Capacitor Shroud



Spareparts - motor

ITEM NO.	PART NO.	DESCRIPTION
1	Q5531996001	End Cover
2	J3642450022	Circlip ϕ 13
3	Q5537046001	Motor Fan B
4	J0782360022	Screw M8x10
5	J0781650464	Screw M4x8
6	J0656000170	Press Plate
7	X5530820229	Gasket O-Ring
8	J0645990198	Valve Flake
9	P5713072014	Valve Plate
10	J7663900198	Valve Flake
11	J3566010170	Limiter
12	X5530820231	Gasket Seal Ring
13	P5710412014	Head
14	J0195790040	Spring Washer ϕ 6
15	J0786040157	Screw M6x50
16	J6993210289	Bushing
17	J0945970152	Cylinder
18	J1763720216	Bearing
19	A5562070649	Stator
20	X5530820250	Pipe O-Ring
21	J7026070152	Pipe
22	J7426030157	Cap
23	J0784910040	Screw M6x16
24	J6535950070	Rod Cover
25	X5532600228	Piston Ring
26	J0725940070	Rod
27	Q5537036001	Motor Fan A
28	J0784830022	Screw M8x15
29	J0780560032	Screw M5x8
30	J2981200040	Lock Washer ϕ 5
31	P5716962014	Crankcase A
32	J1226050170	Plate
33	J0786210032	Screw M4x8

ITEM NO.	PART NO.	DESCRIPTION
34	A5532060635	Rotor
35	J0805930157	Screw M5x120
36	X5535630230	Crankcase Plug
37	J0190730040	Spring Washer ϕ 5
38	P5716972014	Crankcase B
39	J1762350197	Bearing
40	J3535960065	Crank

Figures

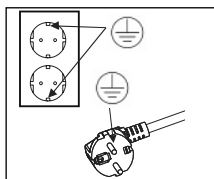


Fig. A

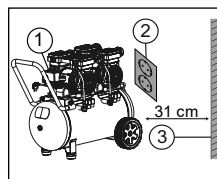


Fig. B

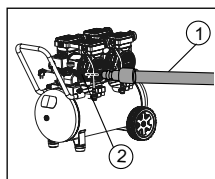


Fig. C

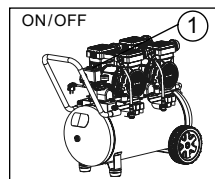


Fig. D

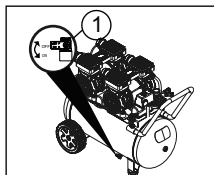


Fig. E

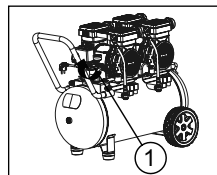


Fig. F

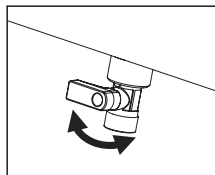


Fig. G

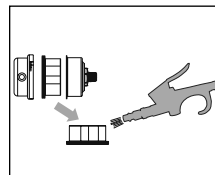


Fig. H

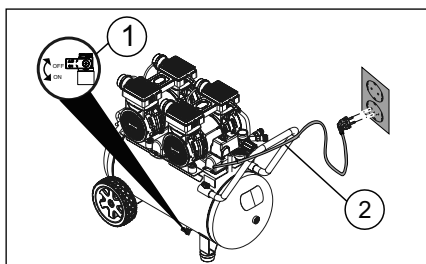


Fig. I

Key parts

