

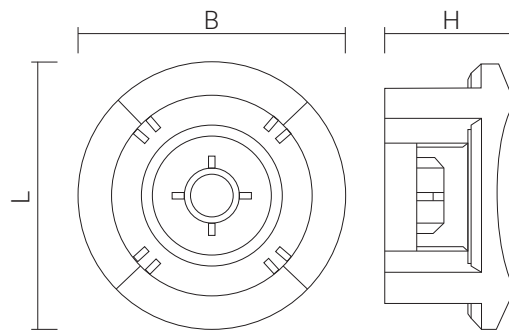
Features

- Base for fixings with cable tie. Allows the installation of any kind of pipes, tubes or cables with cable ties of 10 mm maximum width.
- Compatibility with FORCE ONE+, FOX and other nailers.
- Patented stick fit design. Allows firm holding on the nailer's nose piece.
- Allows installation of the cable ties in two directions. [4 entries at 90°].
- Upper side curved shape for better positioning of the pipe.

Certificates and approvals



Main dimensions



Base materials

- Steel
- Concrete
- Concrete block
- Solid brick

Reference	H [mm]	L [mm]	B [mm]
9TBB	13	27.5	27.5
9GRTBB	13	27.5	27.5

Product specifications

- Material: Manufactured with Polyamide 6 modified with elastomer.
- Colors: Available in black (RAL 9001) and grey (RAL 7035)
- Temperature:
 - Installation -5°C(*) / + 45°C
 - Use: continuous -10°C / + 90°C, peaks -25°C / +110°C.

(*) 0°C installation using a gas nailer.

Installation parameters

Material		Steel	Concrete	Concrete block
Minimum spacing distance	S_{min} (mm)	100	100	100
Minimum edge distance	C_{min} (mm)	25	75	100
Minimum thickness	h_{min} (mm)	3.5	100	35

Installation procedure



Recommended loads

Material	5mm steel	Prefabricated concrete	250Kg/cm ₂ concrete	Concrete blocks
Selected nail ⁽¹⁾	TKA15	XHA22	TKA25	TKA25
Recommended loads (kg)	20	35	30	25

(1) Recommended nail by CELO according to different material